

American Medical Association

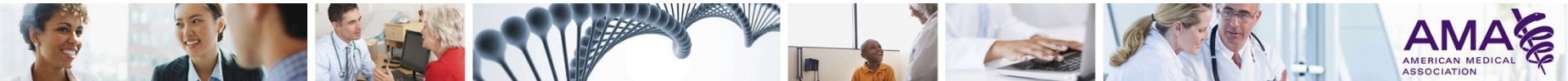
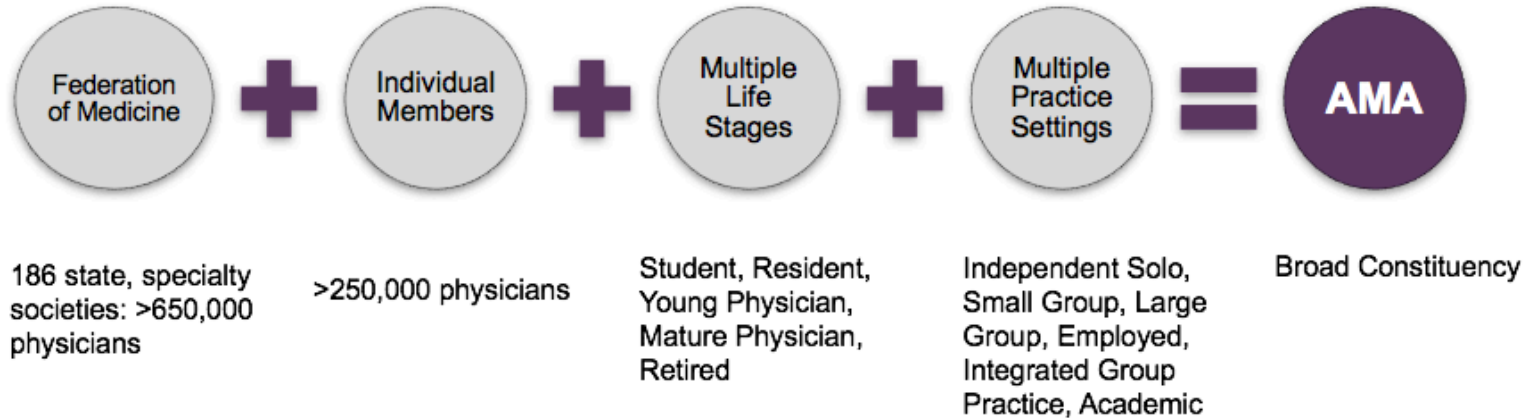
Katie Johansen Taber

Director, Science Policy

Secretary, Council on Science and Public Health



The AMA represents:



“Promoting the art and science of medicine and the betterment of public health”

Support physician professional organizations

Support individual physicians

Provide expertise in career and practice management

Provide resources for clinical practice

Advocate for physicians in government, courts, and public

Education/CME Offerings



Education Center Search !

Search CME Courses



Refine Search:

[Clear Filters](#)

807 Results

Most Recent

SOURCE:

- The JAMA Network® (690)
- AMA STEPS Forward™
practice improvement
strategies (40)
- Additional AMA courses (77)

CREDIT AMOUNT:

- < 1 (80)
- > 1 (15)
- 1 (712)

FORMAT:

- Enduring material (109)
- Journal-based CME activity
(692)
- PI CME activity (6)

Reevaluation of Diagnosis in Adults With Physician-Diagnosed Asthma ↗

Educational Objective To determine whether asthma medications may be discontinued safely in some patients.

Course Year: 2017
Credit Amount: 1.0
Journal-based CME activity
Expiration Date: 2020-01-17

Harnessing the Immune System as a Therapeutic Tool in Virus-Associated Cancers ↗

Educational Objective To learn the potential role of the immune system in the treatment of virus-associated cancers.

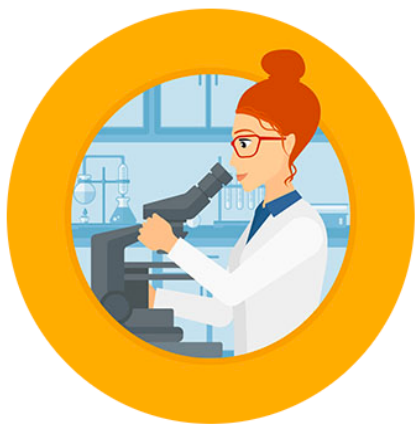
Course Year: 2017
Credit Amount: 1.0
Journal-based CME activity
Expiration Date: 2020-01-12

Some work, some need help

<i>We have active programs addressing provider genomic literacy – here's what's working</i>	<i>We are developing and planning programs addressing provider genomic literacy – Here's what we are doing and what we need</i>
Program title(s)	Program goals
Type (resource development, curriculum/course, self-learning)	Type (resource development, curriculum/course, self-learning)
Strategies (e.g. embed genomics in other educational activities, require, ...)	Strategies (e.g. embed genomics in other educational activities, require, ...)
Evaluation of trainee competence	Evaluation of trainee competence
Systematic evaluation of program	Systematic evaluation of program
Genetic/genomic Expertise provided by	Genetic/genomic Expertise provided by
Timeline	Timeline
Requests for assistance/collaboration	Requests for assistance/collaboration
Requests for RESEARCH programs	Requests for RESEARCH programs

PRECISION MEDICINE FOR YOUR PRACTICE

CME and CNE modules on the clinical applications of genetic testing



SOMATIC CANCER PANEL TESTING

Explore the benefits and limitations of using large tumor genome panels.



PRENATAL CELL-FREE DNA SCREENING

Know how to appropriately use cell-free DNA (cfDNA) prenatal screening.



PRENATAL EXPANDED CARRIER SCREENING

There are now more options for carrier screening. Learn about the differences.



Precision Medicine for Your Practice

Type (resource development, curriculum/course, self-learning)

Online, interactive, case-based, self-learning

Strategies (e.g. embed genomics in other educational activities, require, ...)

Standalone, bundle with other offerings?

Evaluation of trainee competence

Assess with pre/post tests, but how to assess behavior change beyond asking if practice will change?

Systematic evaluation of program

Genetic/genomic Expertise provided by

Staff develops content with input from SMEs, target audience members. Limits output due to learning curves and competing projects.

Timeline

Requests for assistance/collaboration

How to best build awareness of program and effectively disseminate?

Requests for RESEARCH programs

Game-changer: The Precision Medicine Initiative



- How can we effectively prepare providers?
- How are others in ISCC thinking about this?

Katie Johansen Taber
katherine.johansen@ama-assn.org
312-464-4964

